

**Тошкент Тиббиёт Академияси
Даволаш ва Даволаш ва Санитария-
гигиена факултетларини
одам анатомияси ва ОХТА кафедраси**

Тузувчилар:

Доктор медицинских наук, профессор Миршарапов У.М.

Кандидат медицинских наук, доцент Тастанова Г.Э

Тошкент-2007

Мускуллар ҳақида таълимот, гавда мускуллари



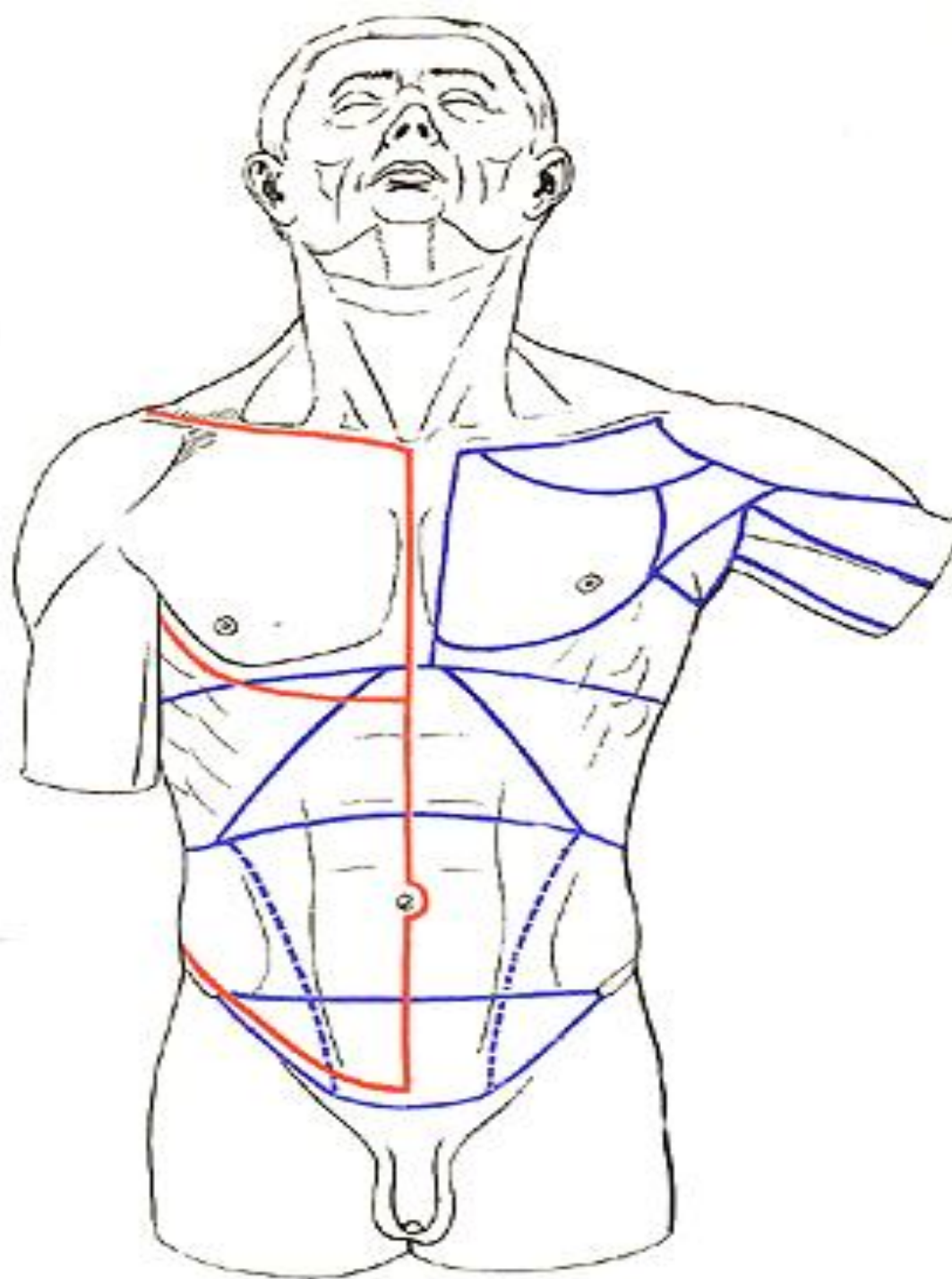
- **Маърузанинг мақсади:**
Талабаларни мускуллар ҳақида умумий маълумотлар ва гавда мускуллари билан таништириш, мақсад ва вазифалар.

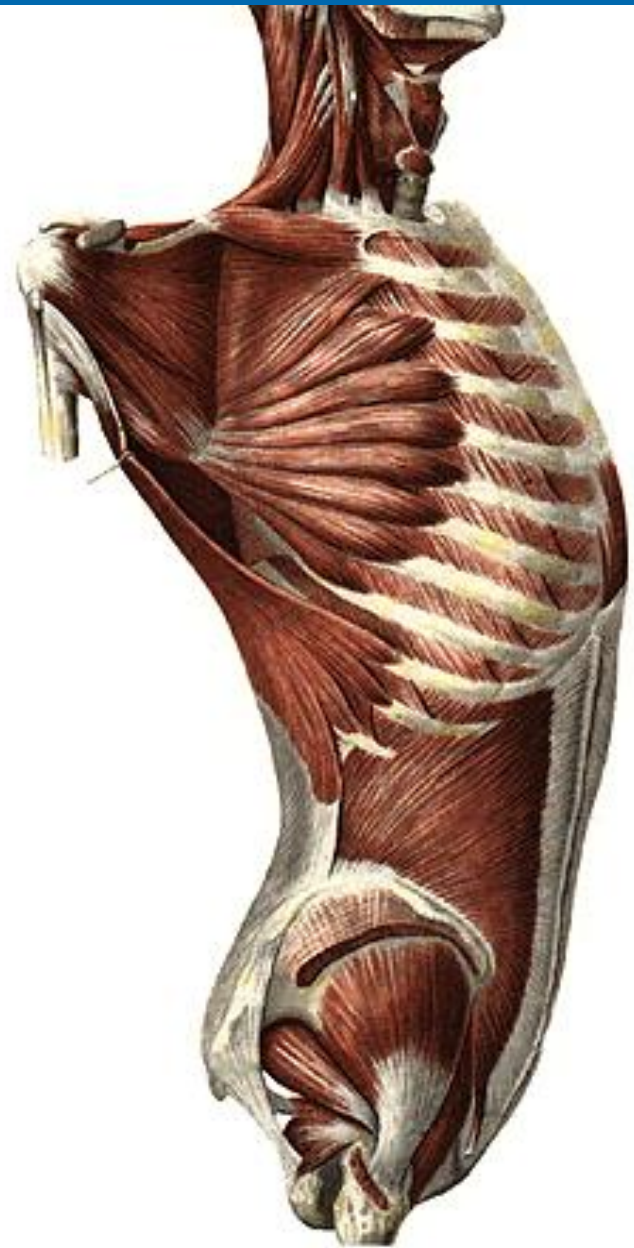
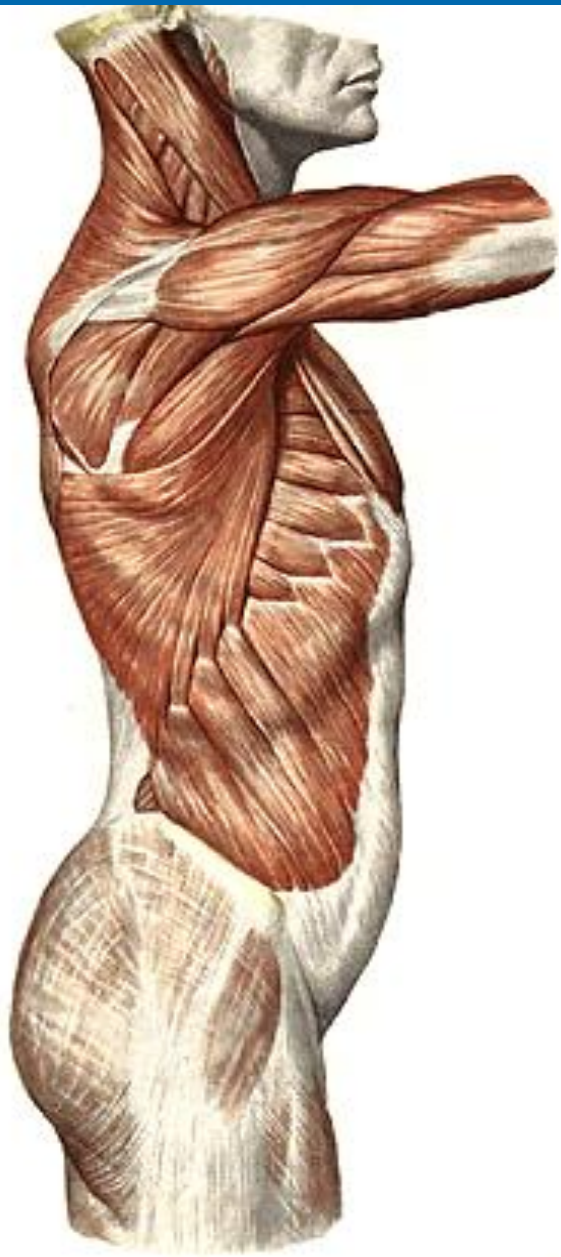
- **Маърузанинг режаси:**
- **Мускул тўқимаси.**
- **Мускулларнинг силлиқ, кўндаланг, тарғил мускулларга бўлиниши.**
- **Мускулларнинг такомиллашуви.**
- **Мускулларнинг ёшга ва бажарадиган ишига қараб ўзгариши.**
- **Мускулларнинг тармоқланиш қонуниятлари.**
- **Кўкрак ва қорин мускуллари фасциялари.**
- **Чов канали. Қорин тўғри мускулининг қини.**
- **Қорин олд деворининг топографияси.**
- **Орқа мускуллари ва фасциялари.**
- **Хулоса.**

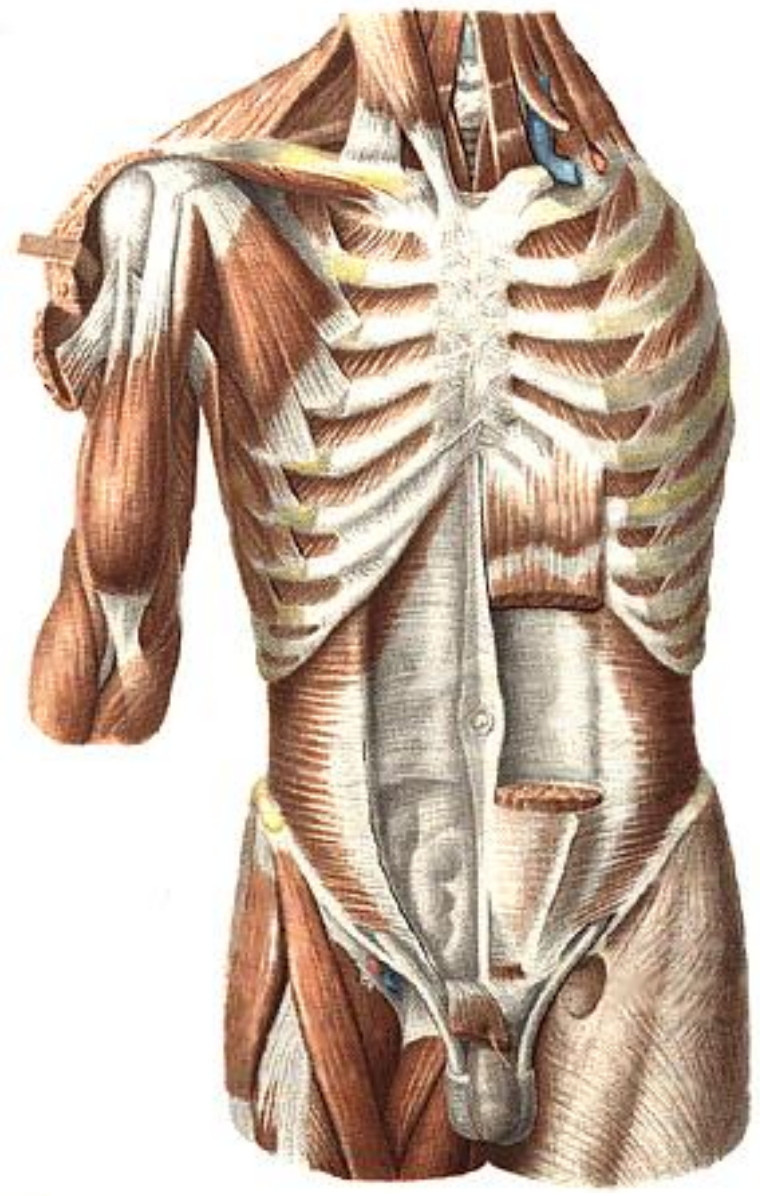
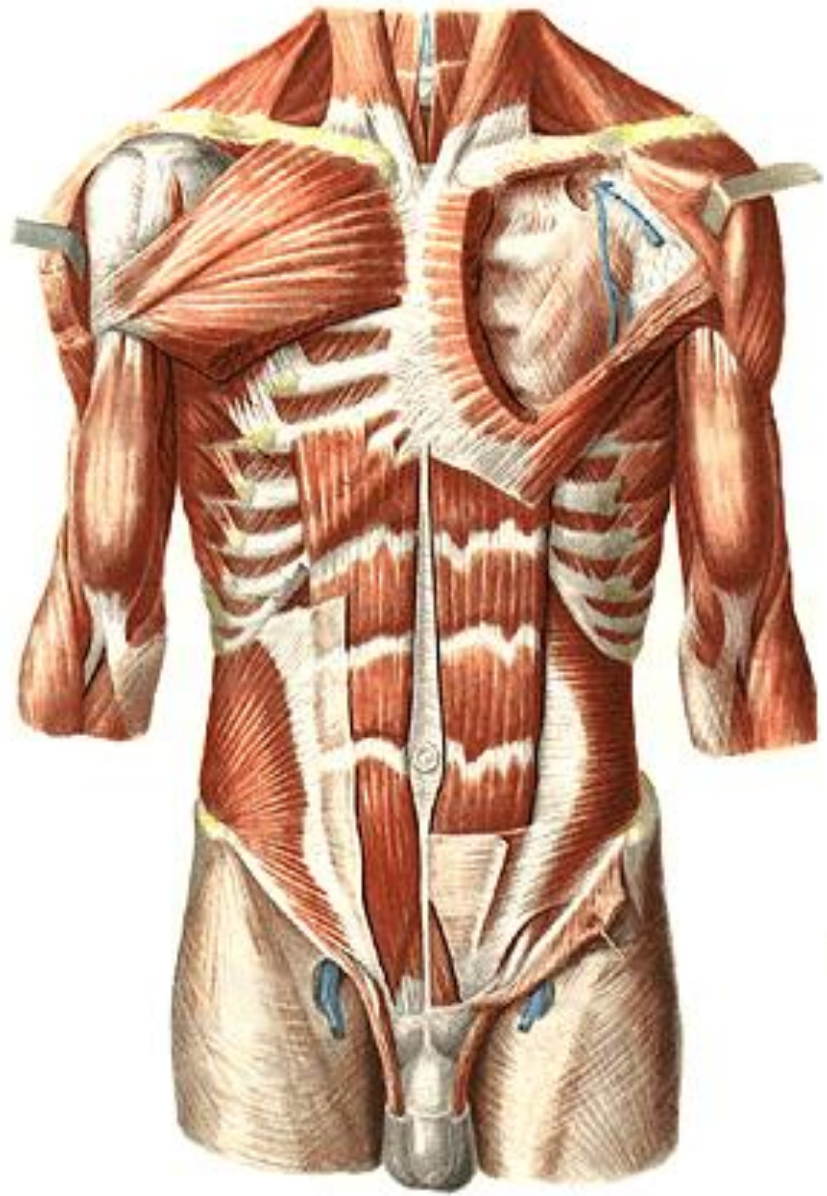


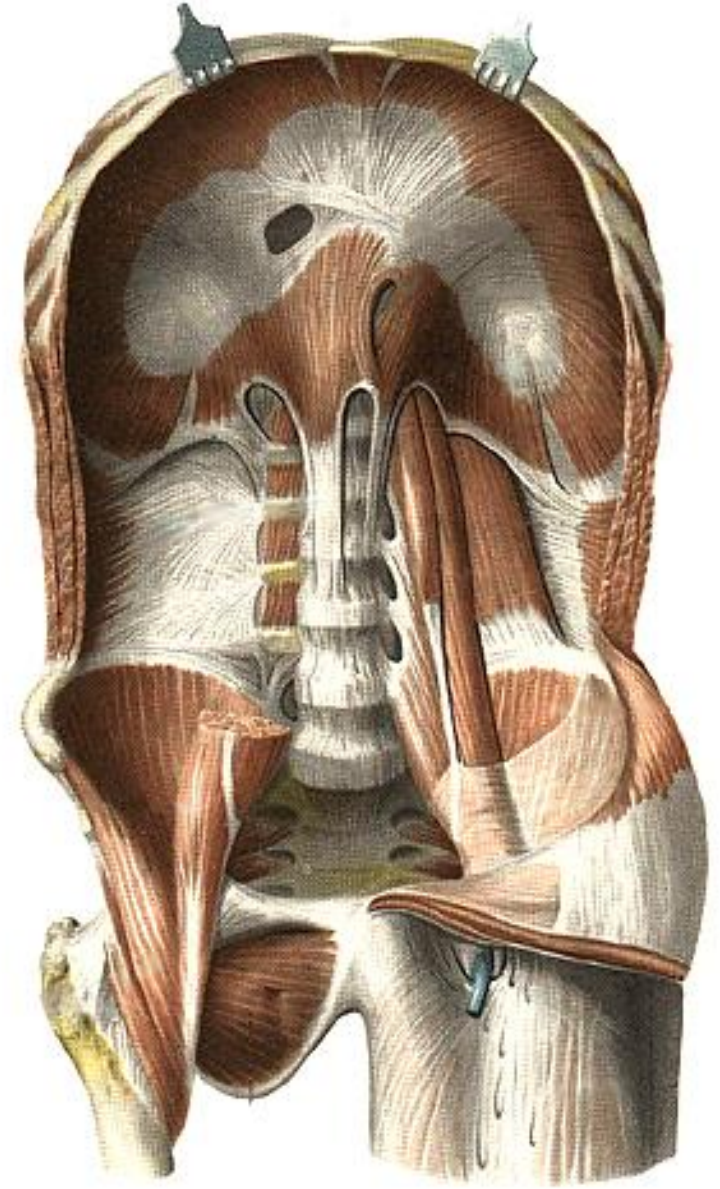
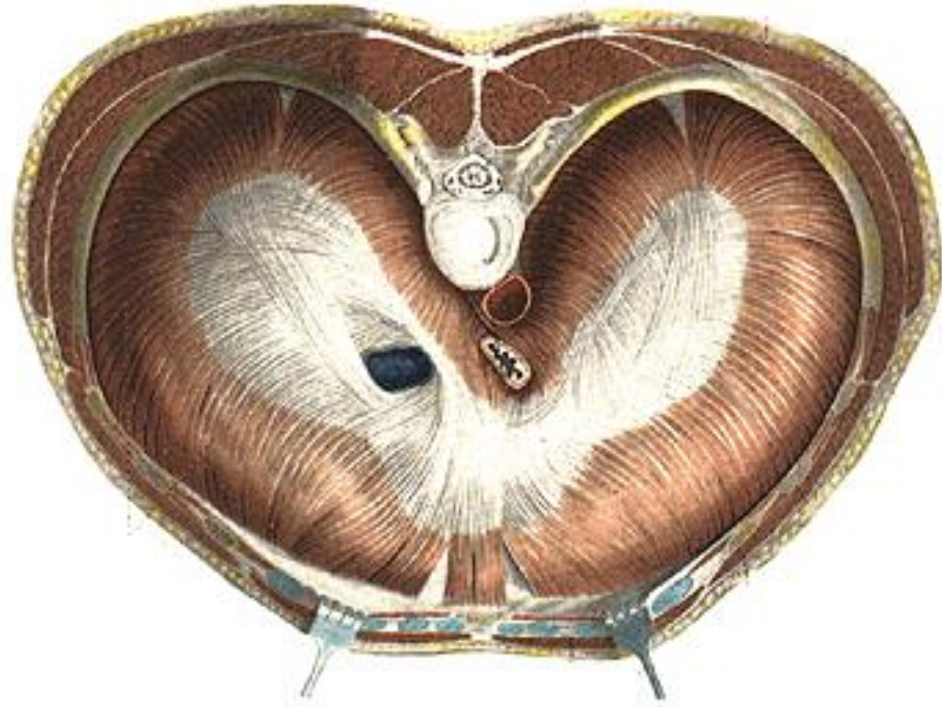


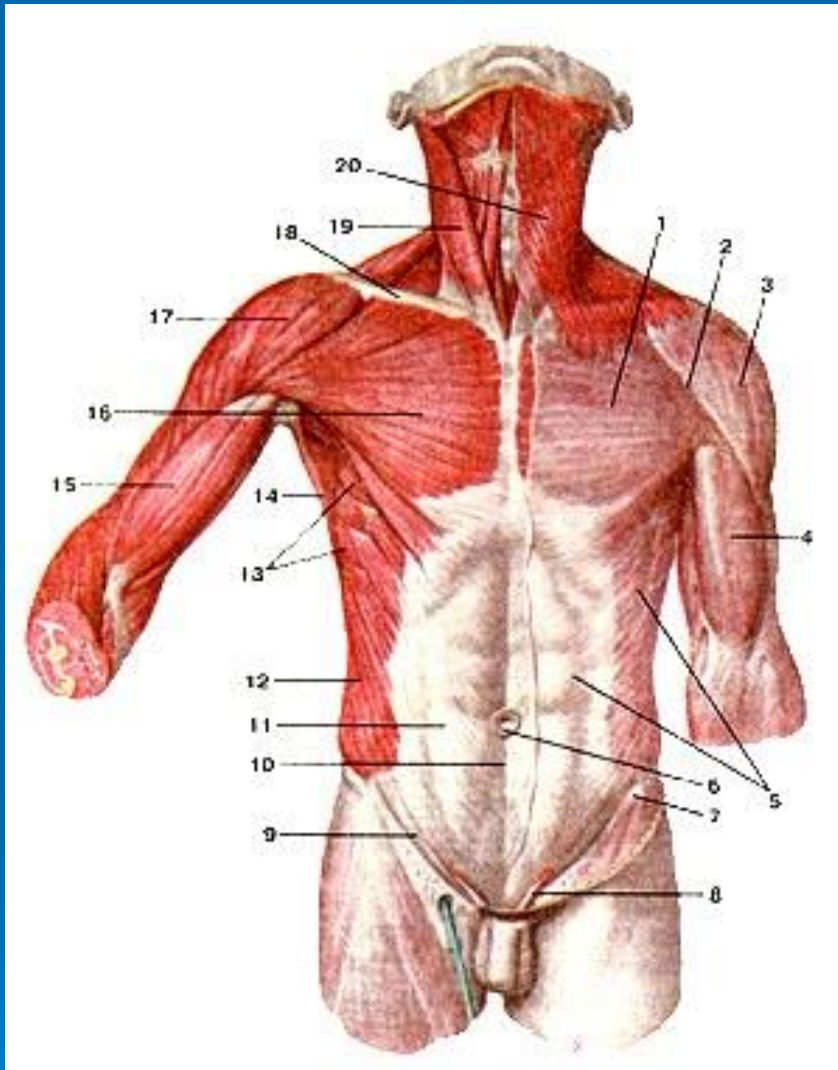






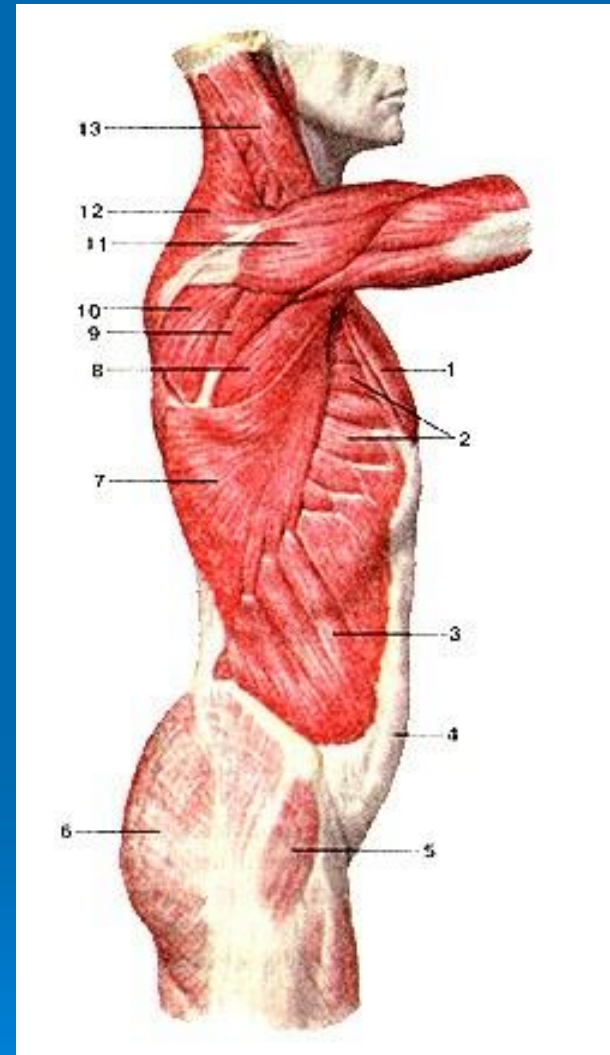


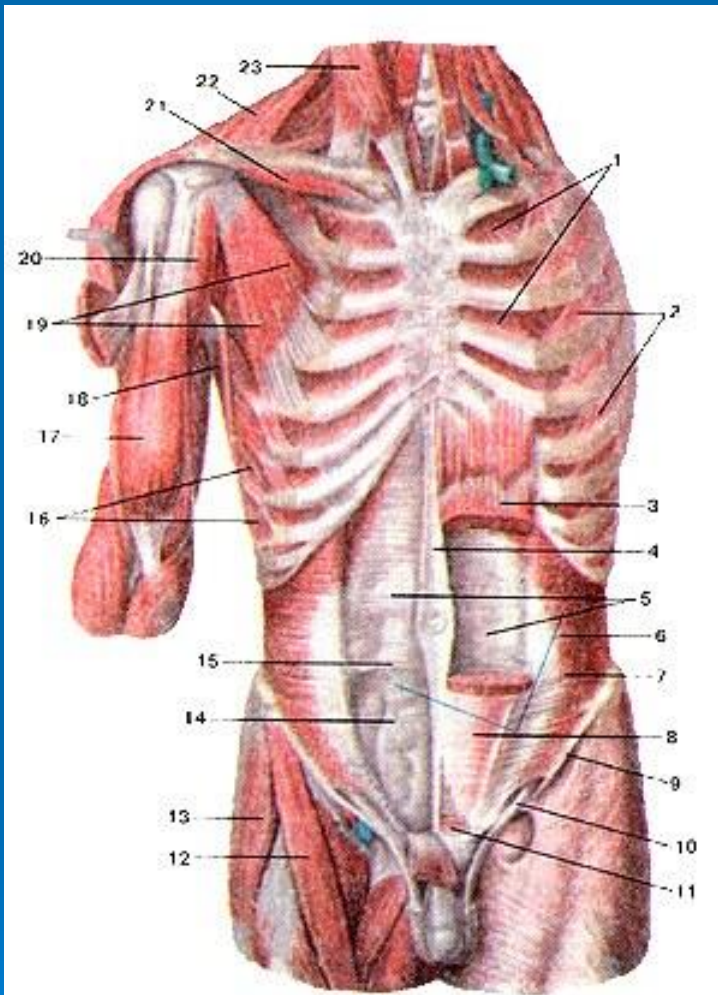




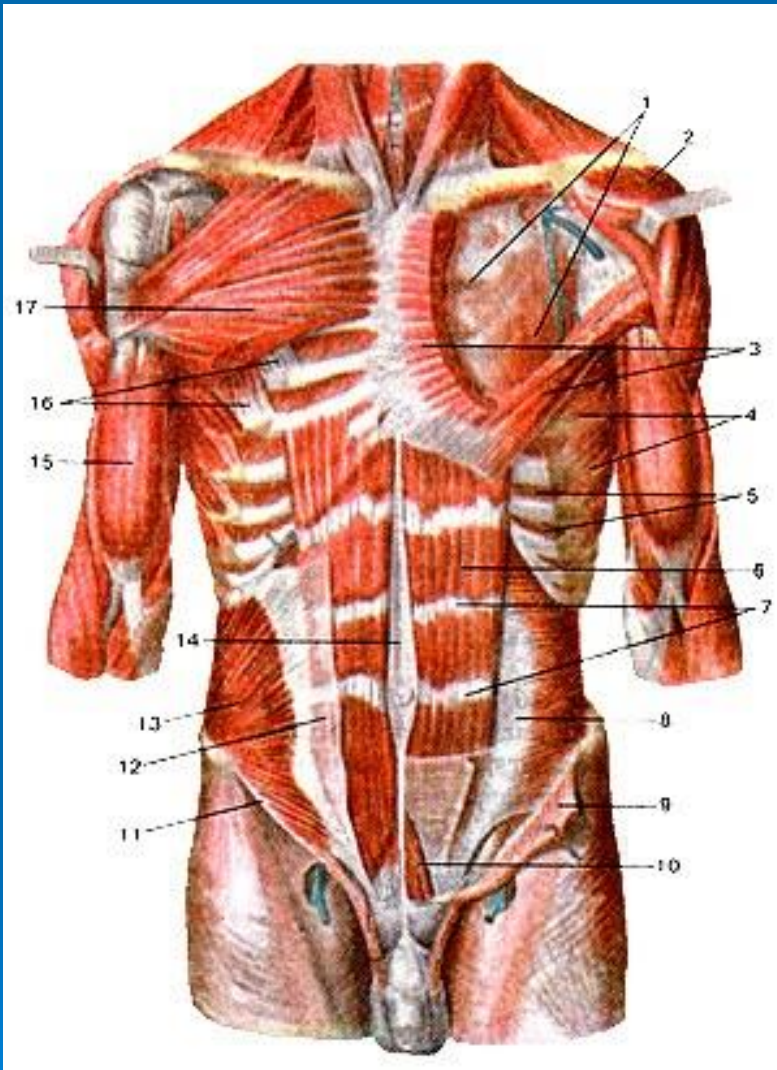
1-fascia pectoralis (lamina superficialis); 2-sulcus deltoideopectoralis; 3-fascia deltoidea; 4-fascia brachii; 5-fascia propria abdominis (lamina superficialis); 6-anulus umbilicalis; 7-spina iliaca anterior superior; 8-funiculus spermaticus; 9-lig.inguinale; 10-linea alba (abdominis); 11-aponeurosis m. obliqui externi abdominis; 12-m. obliquus externus abdominis; 13-m. serratus anterior; 14-m. latissimus dorsi; 15-m.biceps brachii; 16-m. pectoralis major; 17-m. deltoideus; 18-clavic-ula; 19-m. sternocleidomastoideus; 20-platysma.

➤
1-m. pectoralis major; 2-t. serratus anterior; 3-m. obliquus extemus abdominis; 4-aponeurosis m. obliqui extern! abdominis; 5-m.tensor fasciae latae; 6-m. gluteus maximus; 7-m.latissimus dorsi; 8-m. teres major; 9-m. teres minor; 10-m. infraspinatus; 11-m. deltoideus; 12-m. trapezius; 13-rn. sternocleidomastoideus.

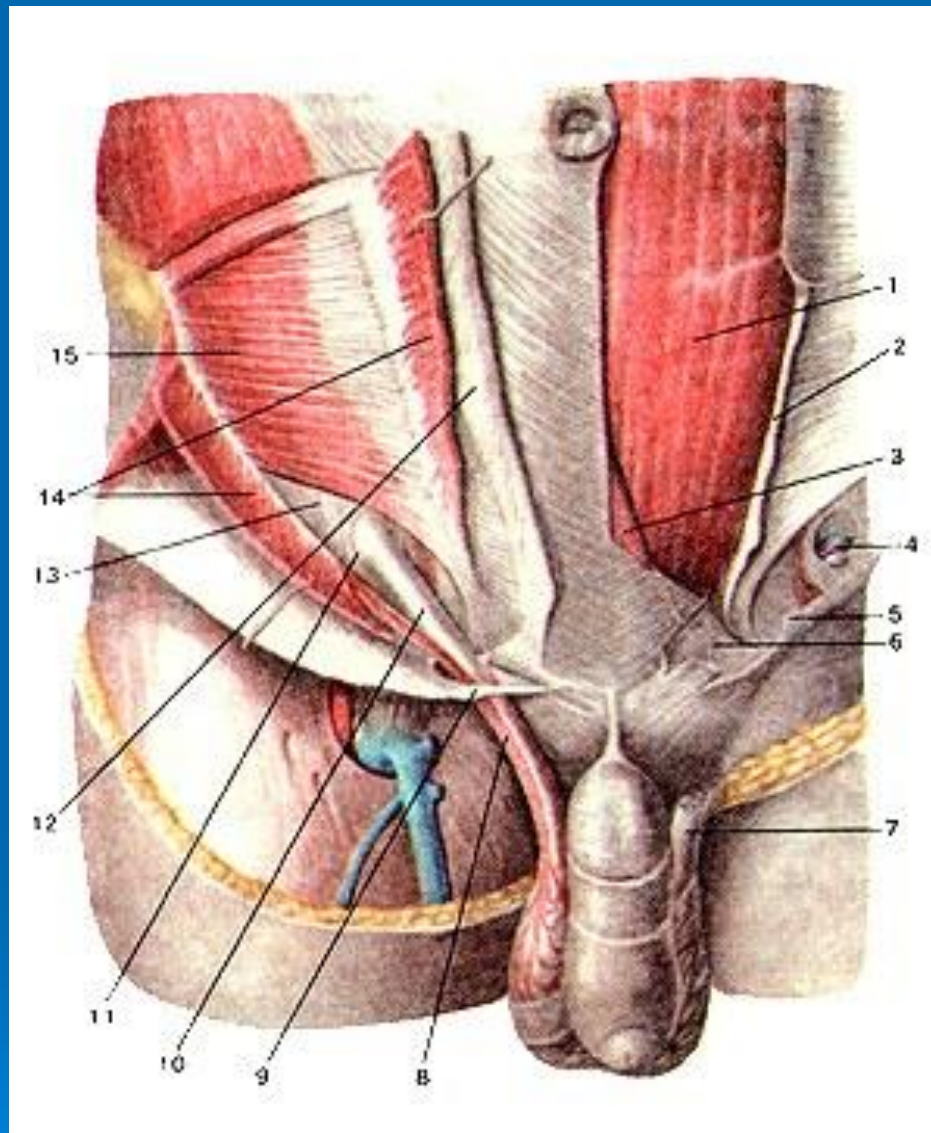


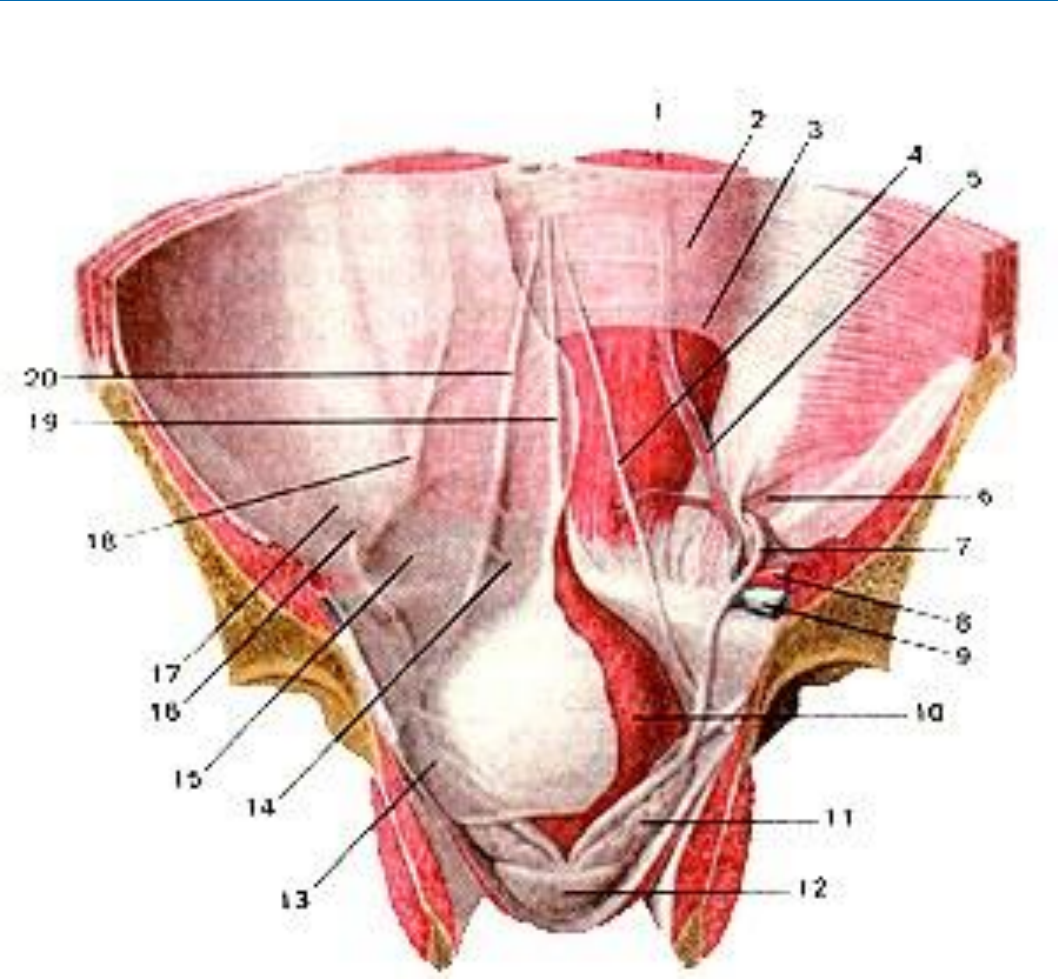


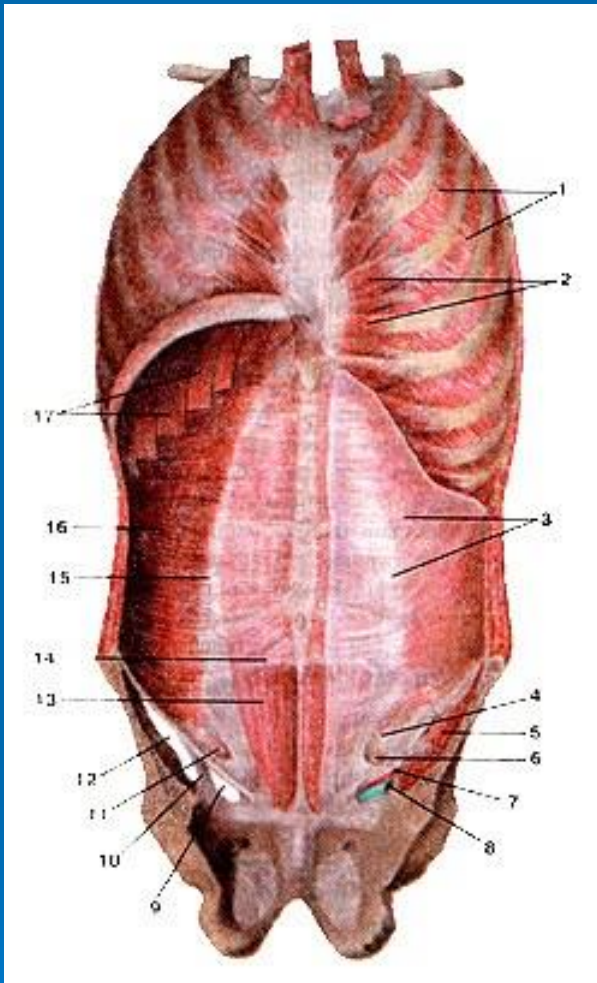
- 1-m. intercostalis interni; 2-m. intercostalis externi; 3-m. rectus abdominis (частично удалена); 4-linea alba (abdominis); 5-vagina m. recti abdominis (lamina posterior); 6-linea arcuata; 7-m. transversus abdominis; 8-vaginae m. recti abdominis (lamina anterior); 9-lig.inguinale; 10-funiculus spermaticus; 11-m. pyramidalis; 12-m. sartorius; 13-m. tensor fasciae latae; 14-fascia transversalis; 15-vagina m. recti abdominis (lamina posterior); 16-m. serratus anterior; 17-m. biceps brachii; 18-m. latissimus dorsi; 19-m. pectoralis minor; 20-m. coracobrachialis; 21-m. subclavius; 22-m. trapezius; 23-m. sternocleidomastoideus.



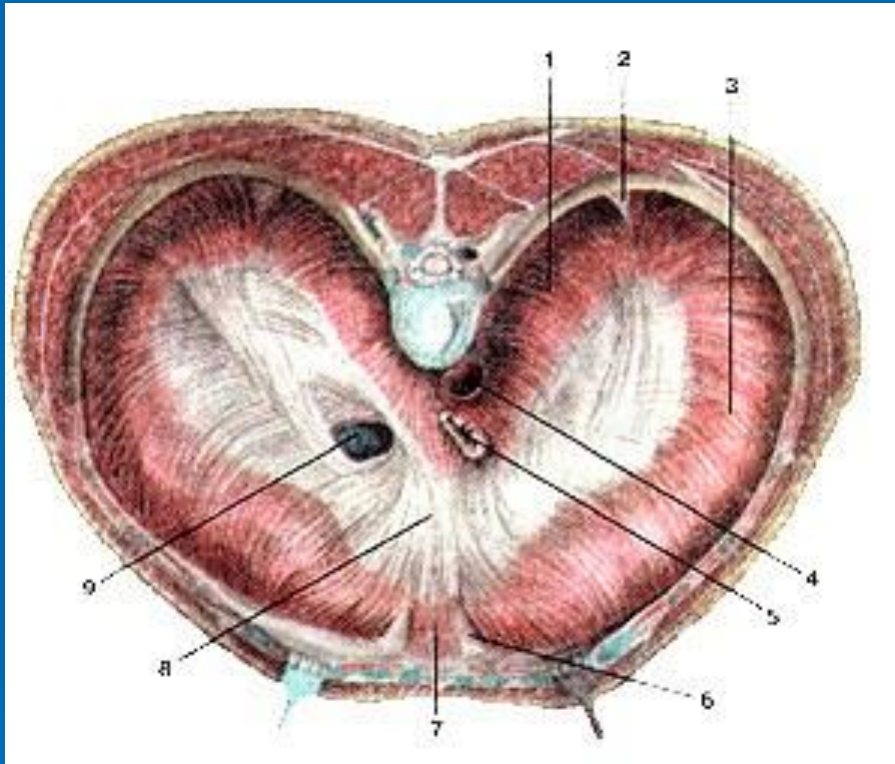
- 1-lamina profunda fasciae pectoralis; 2-m. deltoideus; 3-m. pectoralis major; 4-m. serratus anterior; 5-mm. intercostales interni; 6-m. rectus abdominis; 7-inter-sections tendineae; 8-m. transversus abdominis; 9-m. obliquus internus abdominis; 10-m. pyramidalis; 11-lig. inguinale; 12-aponeurosis m.obliqui interni abdominis; 13-m. obliquus internus abdominis; 14-linea alba (abdominis); 15-m.biceps brachii; 16-m. pectoralis minor; 17-m. pectoralis minor.





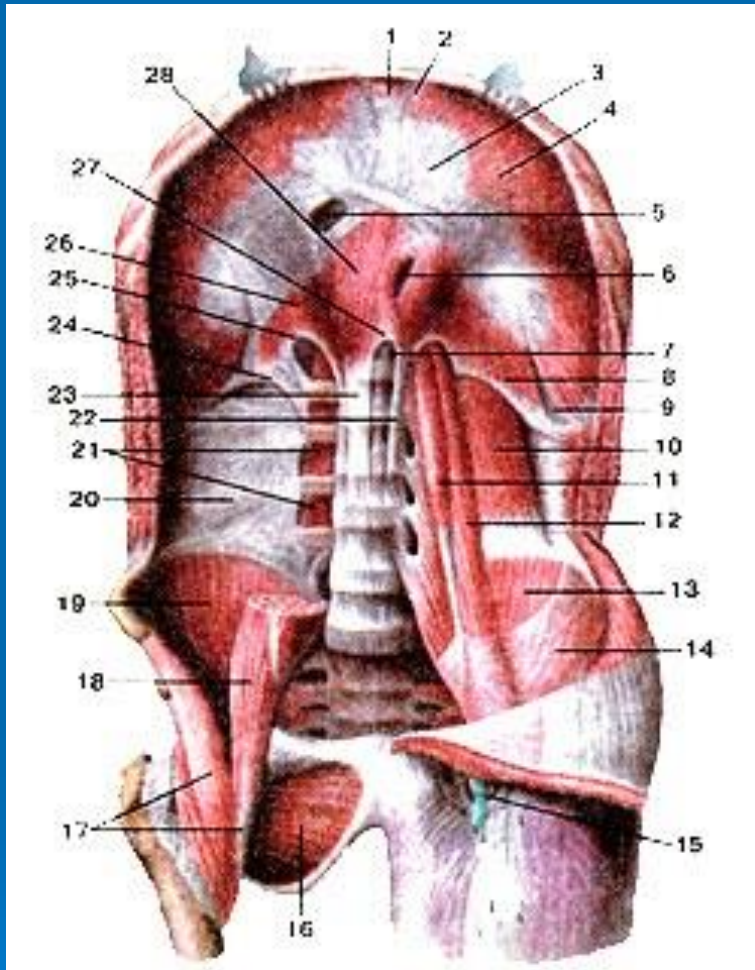


- 1-mm.intercostales interni; 2-m. transversus thoracis; 3-fascia transversalis; 4-anulus inguinalis profundus; 5-m. iliopsoas; 6-funiculus spermaticus; 7-a. iliaca externa; 8-v.iliaca externa; 9-lacu-na vasorum; 10-arcus iliopectineus; 11-anulus inguinalis profundus; 12-lacuna musculorum; 13-m. rectus abdominis; 14-lineaarcuata; 15-linea semilunaris; 16-m. transversus abdominis; 17-diaphragma (pars costalis).

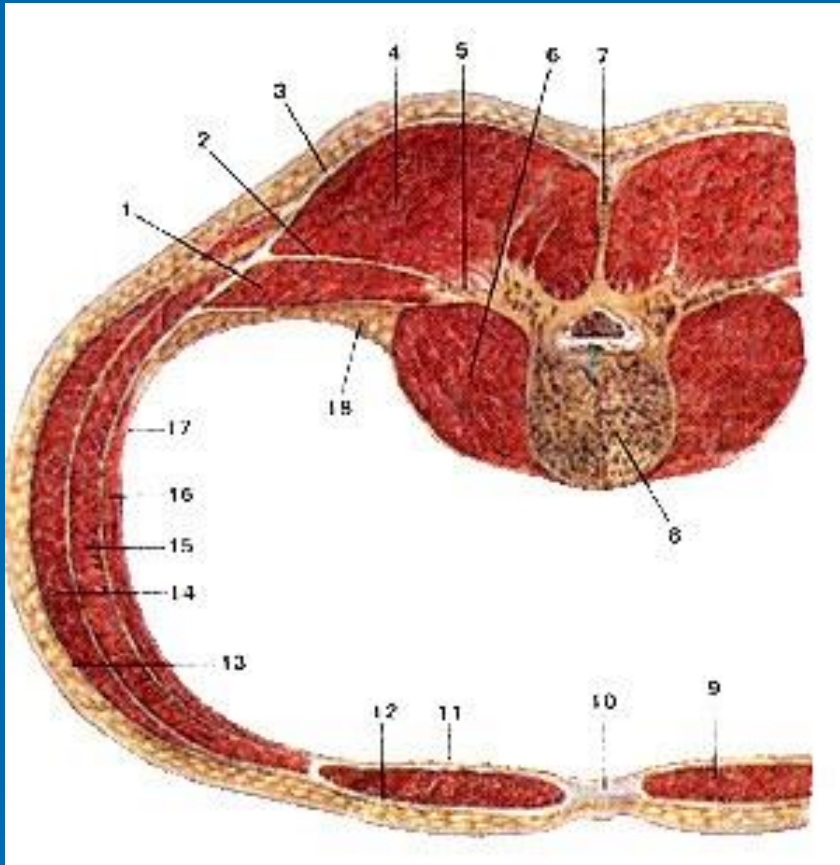


➤ Diaphragma.

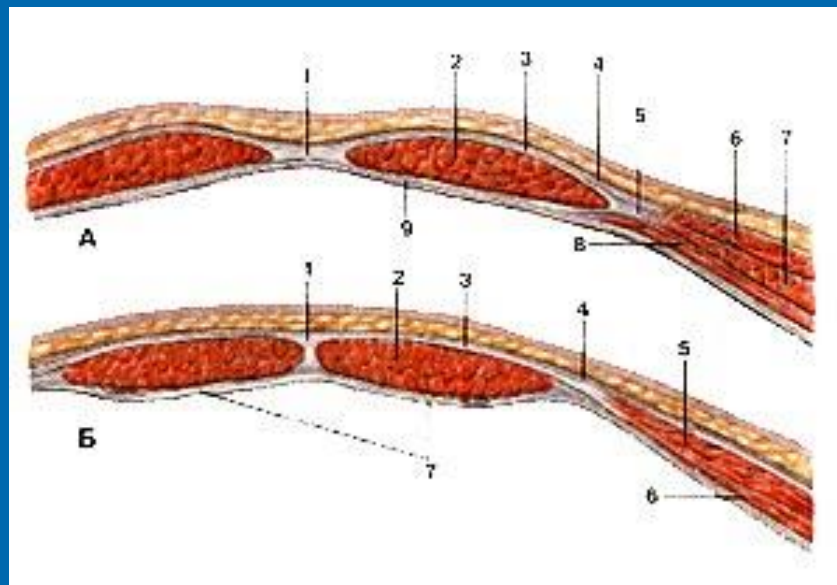
1-pars lumbalis diaphragmae; 2-trigonum lumbocostale; 3-pars costalis diaphragmae; 4-aorta (hiatus aorticus); 5-esophagus (hiatus esophageus); 6-trigonum sternocostale; 7-pars stemalis diaphragmae; 8-centrum tendineum diaphragma; 9-v. cava inferior (foramen vanae cavae).



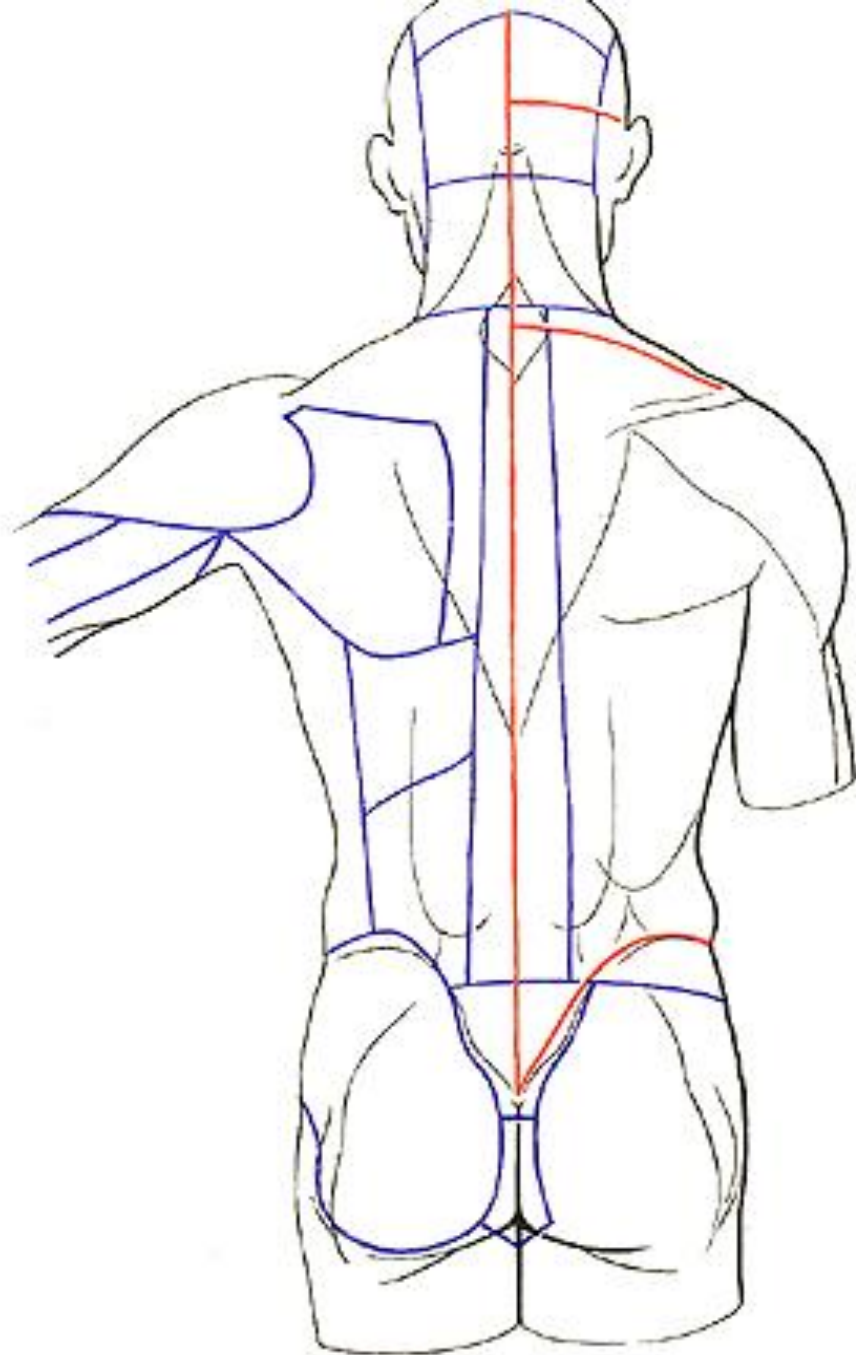
- 1-pars sternalis diaphragmae; 2-trigonum sternocostale; 3-centrum tentiineum diaphragmae; 4-pars costalis diaphragmae; 5-foramen venae cavae (inferioris); 6-hiatus esophageus; 7-hiatus aorticus; 8-crus sinister (partis lumbalis diaphragmae); 9-trigonum lumbocostale; 10-m. quadratus lumborum; 11-m. psoas minor; 12-m. psoas major; 13-m. iliacus; 14-fascia iliaca; 15-hiatus saphenus; 16-m. obturatorius externus; 17-m. iliopsoas; 18-m. psoas major (отрезана); 19-m. iliacus; 20-fascia endoabdominalis; 21-mm. intertransversarii; 22-crus mediale diaphragmae (pars sinistra); 23-crus mediale diaphragmae (pars dextra); 24-lig. arcuatum laterale; 25-lig. arcuatum mediale; 26-crus dextrum partis lumbalis diaphragmae; 27-lig. arcuatum medianum; 28-pars lumbalis diaphragmae.

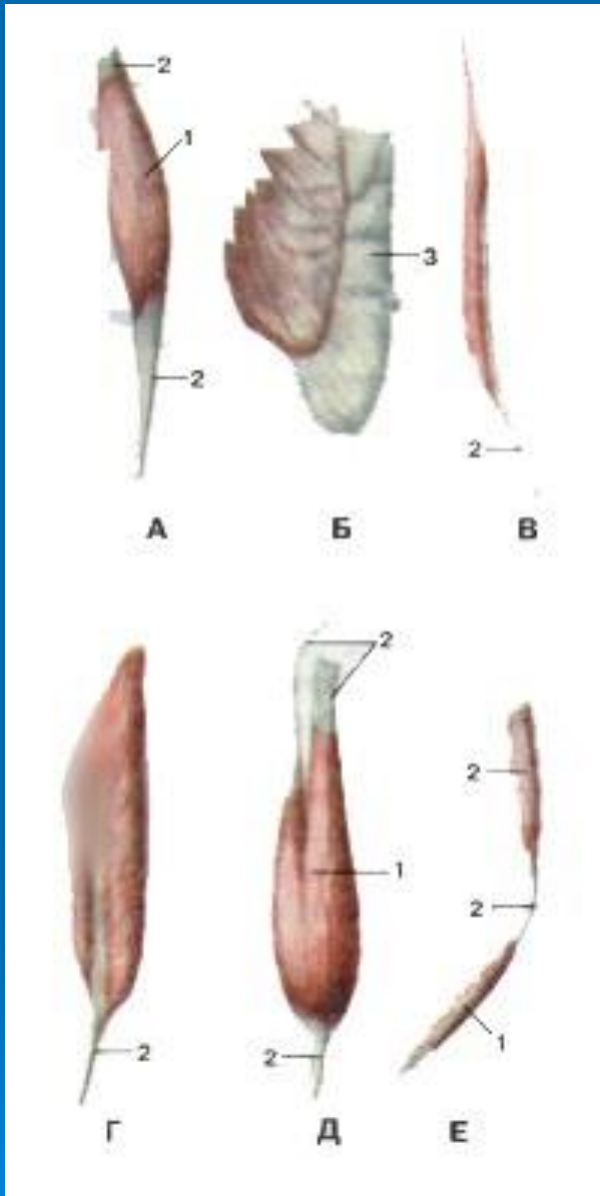


1-m. quadratus lumborum; 2-tascia thoracolumbalis (lamina profunda); 3-fascia thoracolumbalis (lamina superficialis); 4-m. erector spinae; 5-processus transversus vertebrae lumbalis; 6-m. psoas major; 7-processus spinosus vertebrae lumbalis; 8-corpora vertebrae; 9-m. rectus abdominis; 10-linea alba abdominis; 11-lamina profunda vaginae m. recti abdominis; 12-lamina superficialis vagina m. recti abdominis; 13-fascia superficialis (abdominis); 14-m. obliquus externus abdominis; 15-m. obliquus internus abdominis; 16-m. transversus abdominis; 17-tascia endoabdominalis et peritoneum; 18-spatium retroperitoneale (panniculus adiposum)

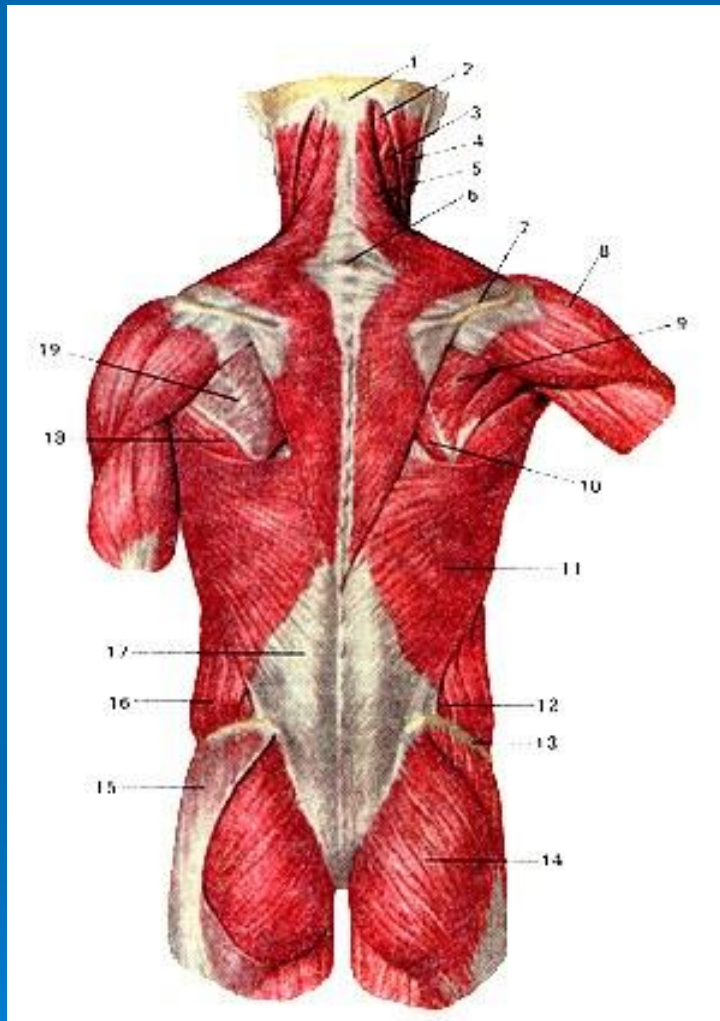


- Vaginae mm. recti abdominis;
- A: 1 -linea alba (abdominis); 2-m. rectus abdominis; 3-lamina anterior vaginae m. recti abdominis; 4-aponeurosis m.obliqui externi abdominis; 5-aponeurosis m. obliqui interni abdominis; 6-m. obliquus externus abdominis; 7-m. obliquus internus abdominis; 8-m. transversus abdominis; 9-lamina posterior vaginae m. recti abdominis. Б: 1-linea alba (abdominis); 2-m. rectus abdominis; 3-lamina anterior vaginae m. recti abdominis; 4-aponeurosis m. obliqui externi abdominis; 5-m. obliquus internus abdominis; 6-m. transversus abdominis; 7-fascia transversalis et peritoneum

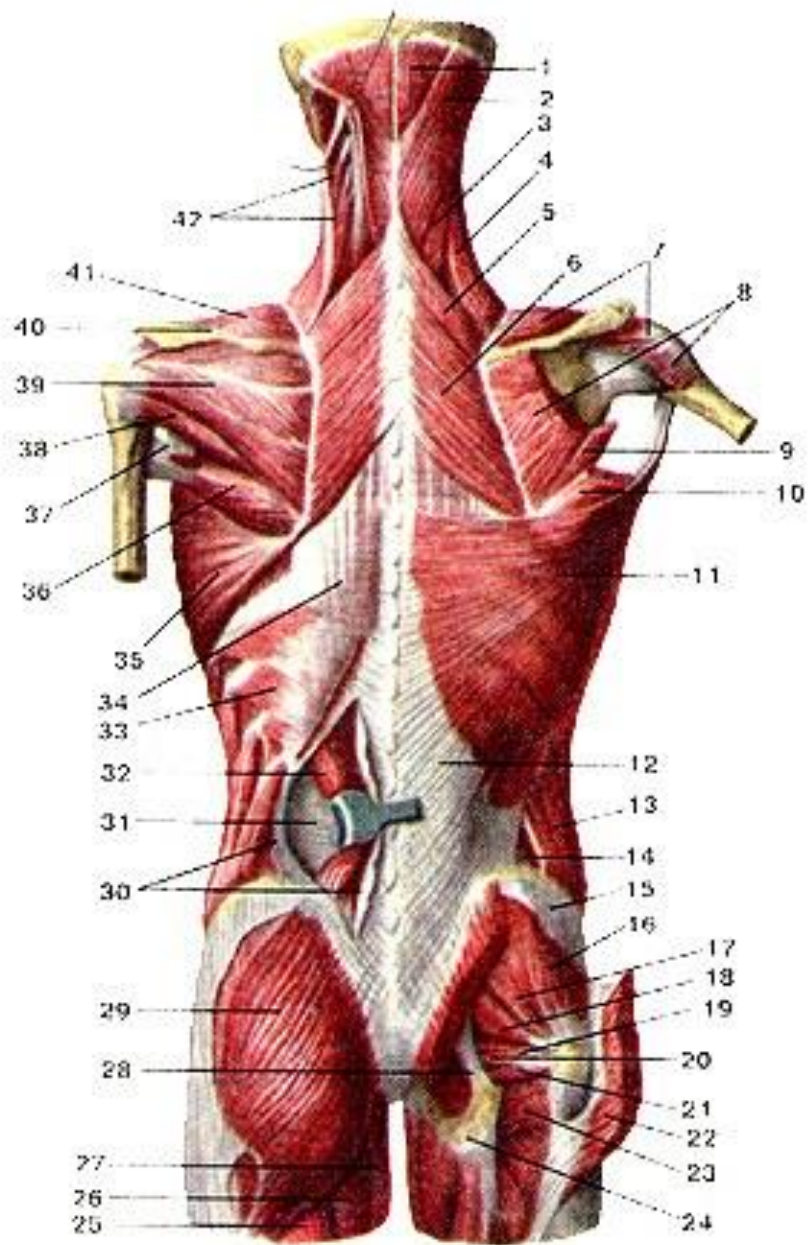


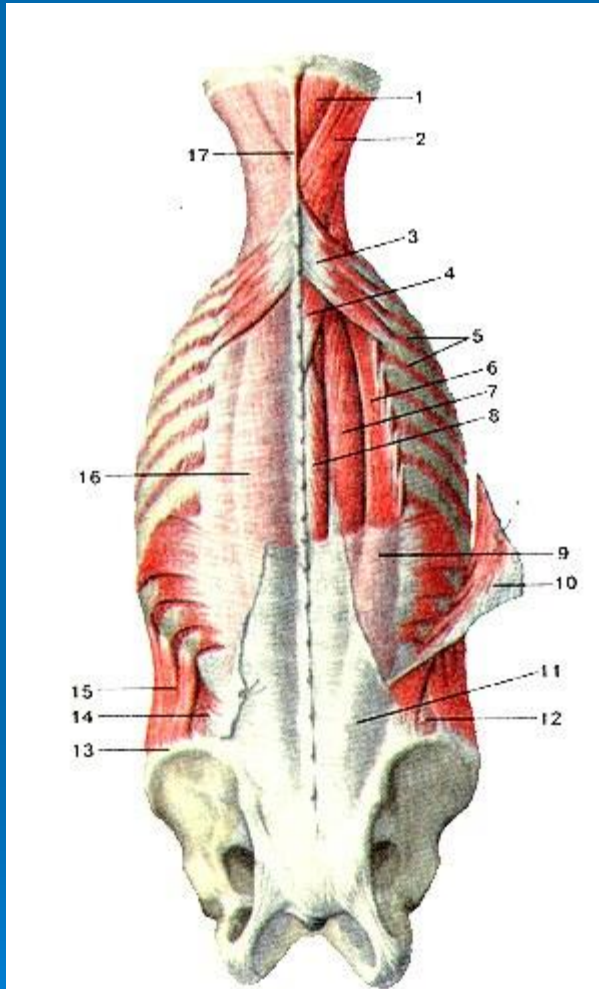


A-*m.fusiformis*;
Б—*m.planus*;
В-*m.unipennatus*;
Г-*m.bipennatus*;
Д-*m.biceps*;
Е-*m.biventer*.
1-venter; 2-tendo;
3-aponeurosis.

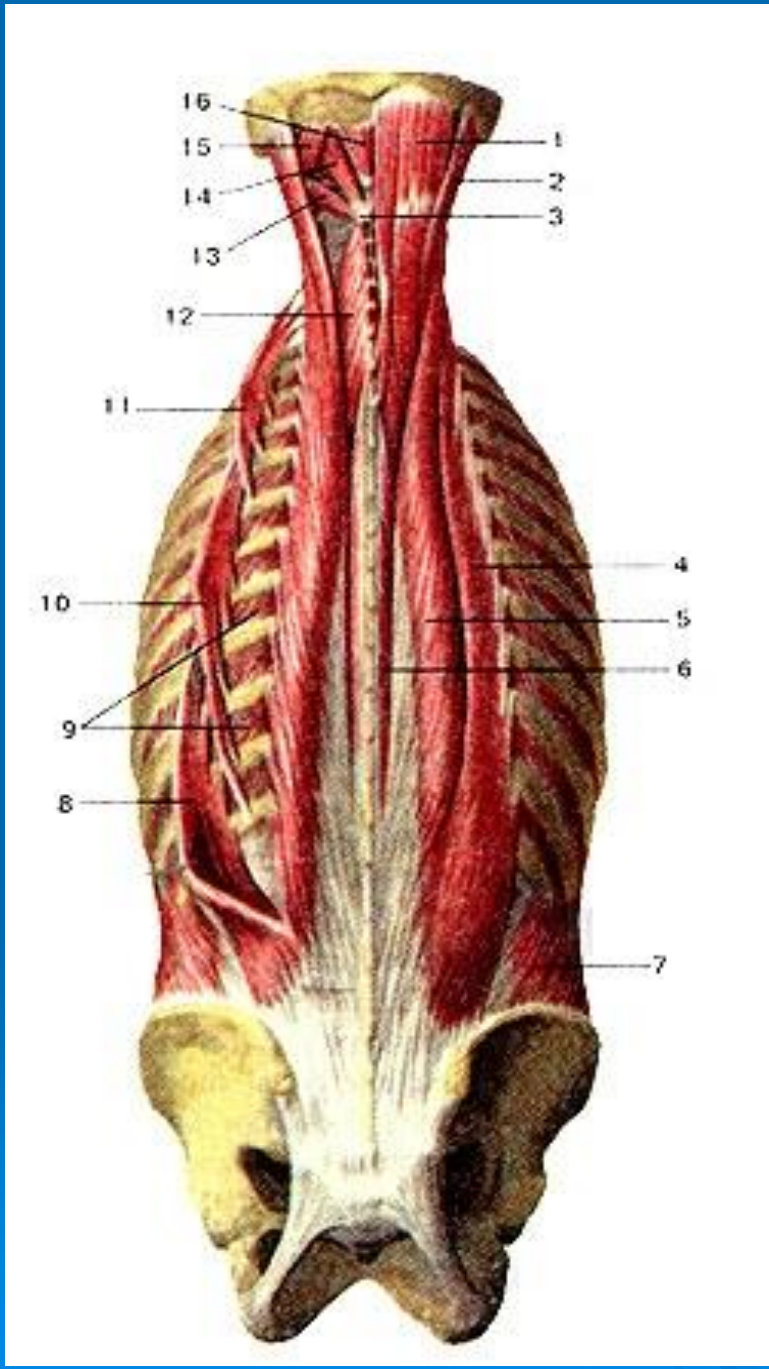


1-protuberantia occipitalis externa; 2-semispinalis capitis; 3-splenius capitis; 4- sternocleidomastoideus; 5-trapezius; 6-processus spinosus vertebrae cervicalis (CVII); 7-spina scapulae; 8-deltoideus; 9-m. infraspinatus; 10-rhomboideus major; 11-m.latissimus dorsi; 12-trigonum lumbale; 13-ala ossis ilii; 14-gluteus maximus; 15-lascia glutei medii; 16-obliquus externus abdominis; 17-fascia thoracolumbalis; 18-teres major; 19- infraspinata.

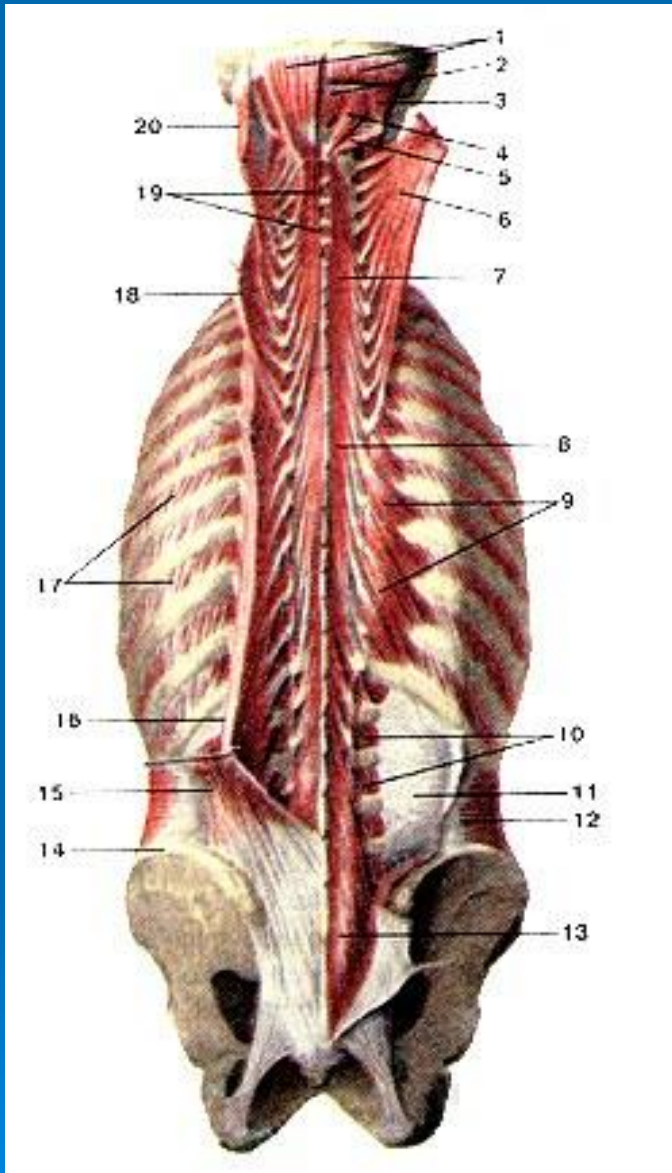




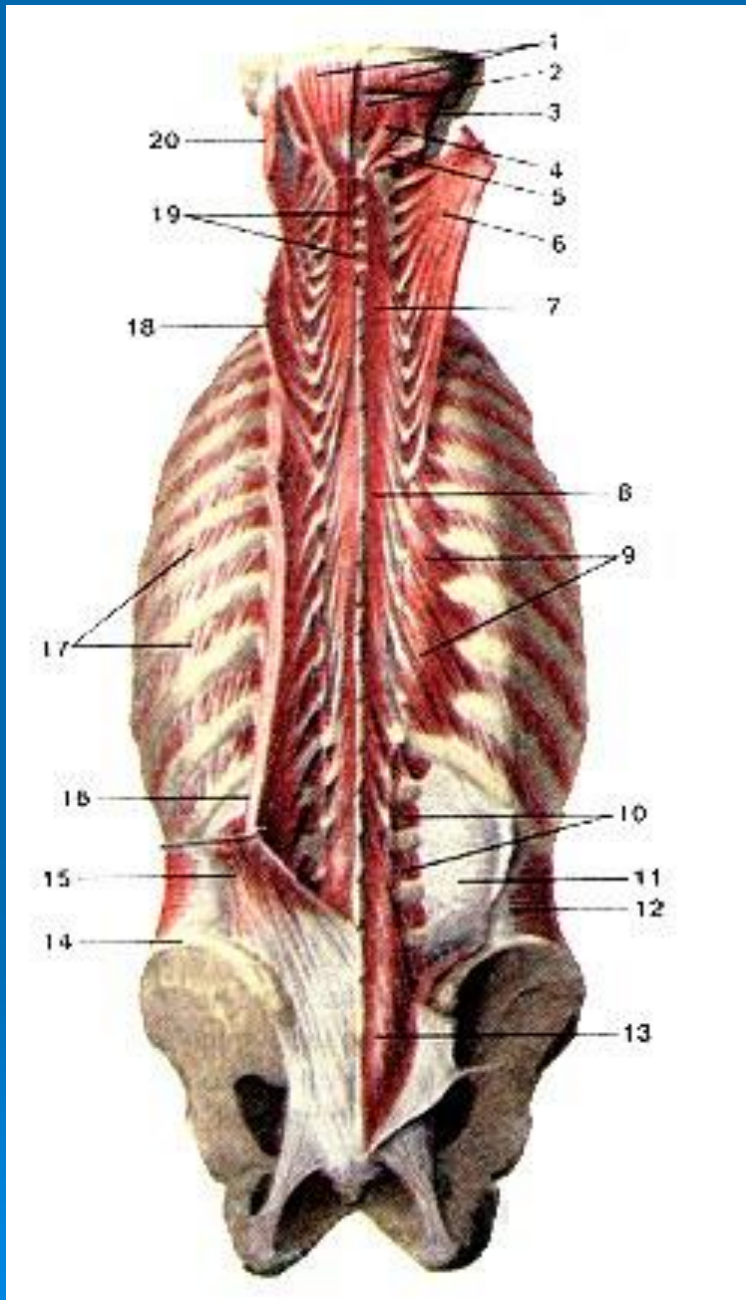
- 1-m.semispinalis capitis; 2- m.splenius capitis; 3-m. serratus posterior superior; 4-m.splenius cervicis; 5- mm. intercostales externi; 6-m ilio-costalis; 7-m. longissimus; 8-m. spinalis; 9-m. serratus posterior interior; 10-m. latissimusdorsi; 11 - fascia thoracolumbalis (lamina posterior); 12-trigonumlumbale; 13-crista iliaca; 14-m. obliquus internus abdominis; 15-m. obliquus externus abdominis; 16-fascia thoracolumbalis; 17- lig.nuchae.



➤
1-m.semispinalis capitis; 2-m. longissimus capitis; 3-processus spin-osus axis; 4-m. iliocostalis; 5-m. longissimus; 6-m. spinalis; 7-m. obliquus internus abdominis; 8-m. iliocostalis lumborum; 9-mm. intercostals externi; 10-m. iliocoslalis; 11-m. iliocostalis cervicis; 12-m. semispinalis cervicis; 13-m. obliquus capitis inferior; 14-m. rectus capitis posterior major; 15-m. obliquus capitis superior; 16-m. rectus capitis posterior minor.



1-m. semispinalis capitis; 2-m. rectus capitis posterior minor; 3-m. obliquus capitis superior; 4-m. rectus capitis posterior major; 5-m. obliquus capitis inferior; 6-m. semispinalis capitis; 7-m. semispinalis cervicis; 8-m. semispinalis thoracis; 9-m. levatores costarum; 10-mm. intertransversarii; 11-lamina profunda (anterior) fasciae thoracolumbalis; 12-crista iliaca; 13-m. iliocostalis; 14-m. longissimus; 15-m. intercostals externi; 16-m. longissimus cervicis; 17-mm. longissimus capitis; 18-m. interspinales cervicis; 19-mm. longissimus cervicis; 20-m. longissimus capitis.



- 1-m. rectus capitis posterior minor; 2-m. obliquus capitis superior; 3-m. rectus capitis posterior major; 4-processus transversus atlantis; 5-arteria vertebralis; 6-m. obliquus capitis inferior; 7-processus spinosus axis; 8-membrana atlantoaxialis posterior; 9-tuberculum posterius atlantis; 10-arteria vertebralis; 11-m. rectus capitis lateralis; 12-processus mastoideus; 13-m. rectus capitis posterior major; 14-m. obliquus capitis superior.

Эътиборингиз учун раҳмат!!!

